



PUSH-UP VOLUME  
& CURVES



## MAKE-UP RESULT

LASH QUEEN  
SEXY BLACKS  
M A S C A R A

LASH QUEEN  
SEXY BLACKS  
M A S C A R A

- PUSH-UP VOLUME
- PROVOCATIVE  
CURVES

- COATING VOLUME
- CURVES
- SEPARATION

Wax™ complex  
= Instant volume &  
curves

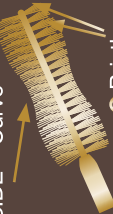


- Lash by lash coating
- Sets the curve
- Weightless



Separation

③ Bristles =



② "90-60-90" SIDE = Curve



① FLAT SIDE = Volume

**06-09-06 HSNRB**

A UNIQUE BRUSH/FORMULA DUO

**BRUSH 90-60-90**

① FLAT SIDE:

Coated Volume

② "90-60-90" SIDE:

Curve

③ BRISTLE SLANTED

TOWARDS THE LEFT:

Elegant separation

**COATING FORMULA**

- Corseting effect
- Thickening lash-by-lash coating
- Holds and sets the lash curve
- Supple and elegant (weightless)

## APPLICATION

### APPLICATION

Apply LASH QUEEN  
SEXY BLACKS from the  
roots to the tips

➊ Use the flat side first + turn  
the brush on the axe of the  
brush to coat and curl the  
center of the fringe

➋ With the larger tip and  
base of the brush, catch  
the inner corner and outer  
corner short lashes to curl  
perfectly the full fringe



➊ Curl and coat the center  
of the fringe.  
Flat + 90-60-90 side



➋ Curl the inner and outer  
corner



## UNPRECEDENTED JEWEL-DESIGN



Lace detailing design  
inspired by Calais  
lacework

For the 1<sup>st</sup> time 3D  
lace detailing decor  
Sensuality of a velvet  
touch

# LASH QUEEN SEXY BLACKS M A S C A R A

## MAKE-UP RESULT

- Push-up volume  
& curves

## TECHNOLOGY

(A brush/formula duo)

- 90-60-90 Brush  
= Volumes + Curves  
+ Separation
- Coating formula  
= Coating + Sets the  
curve + Suppleness

## JEWEL DESIGN

- Unprecedented 3D  
lace detailing  
design